

Analysis and Imaging of Responses to School-Related Gender-Based Violence (AnImRS)



Contents

What is School-Related Gender-Based Violence(SRGBV)? 2

The AnImRS Tool 3

Learners Response 4

Teachers Response 7

School Response 9

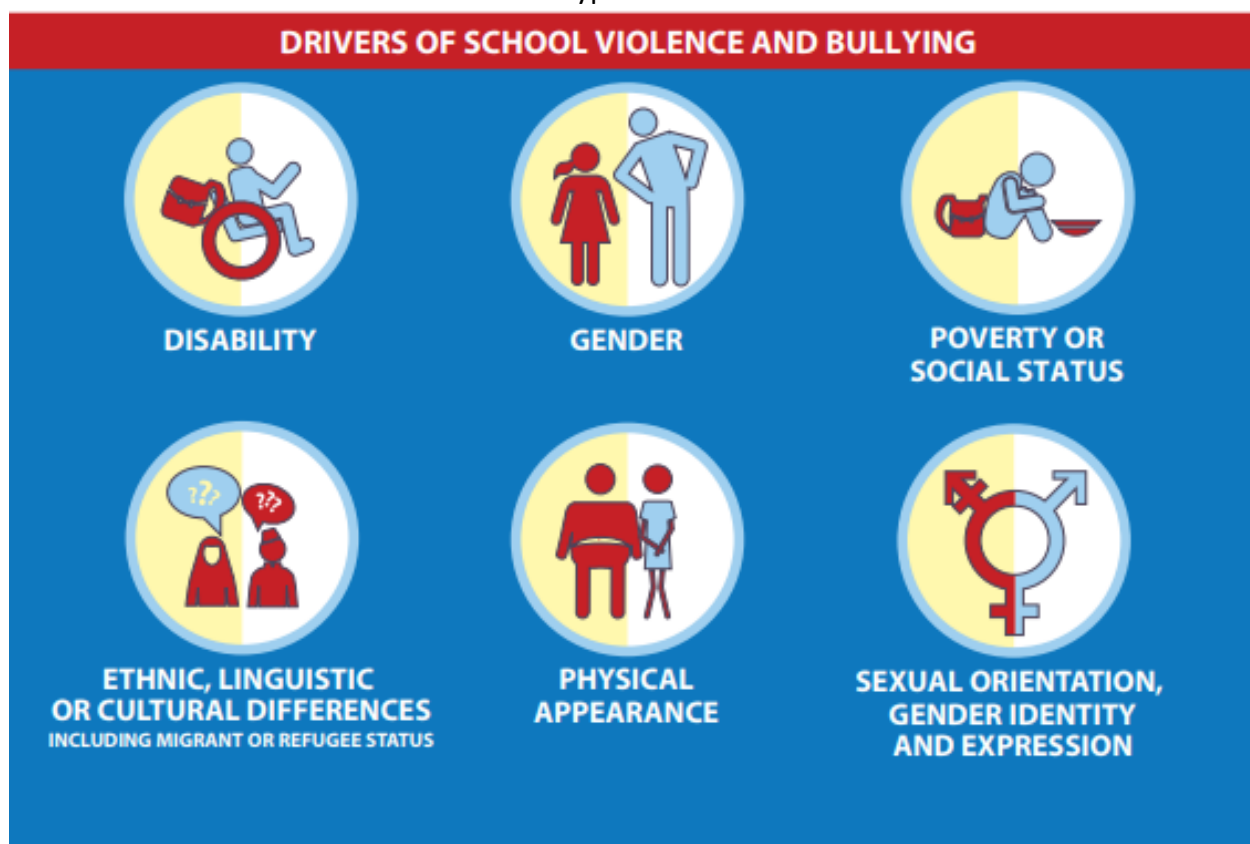
What is School-Related Gender-Based Violence(SRGBV)?

SRGBV is defined as acts or threats of sexual, physical or psychological violence occurring in and around schools perpetrated as a result of gender norms and stereotypes and enforced by unequal power dynamics.

(UNESCO/UNGEI (2015))

SRGBV is under-reported in all contexts for many reasons, such as:

- Personal safety or security risks (such as retribution by the perpetrator)
- Stigmatization of survivors
- Lack of services
- Lack of reporting mechanism
- Cultural norms that condone some types of violence

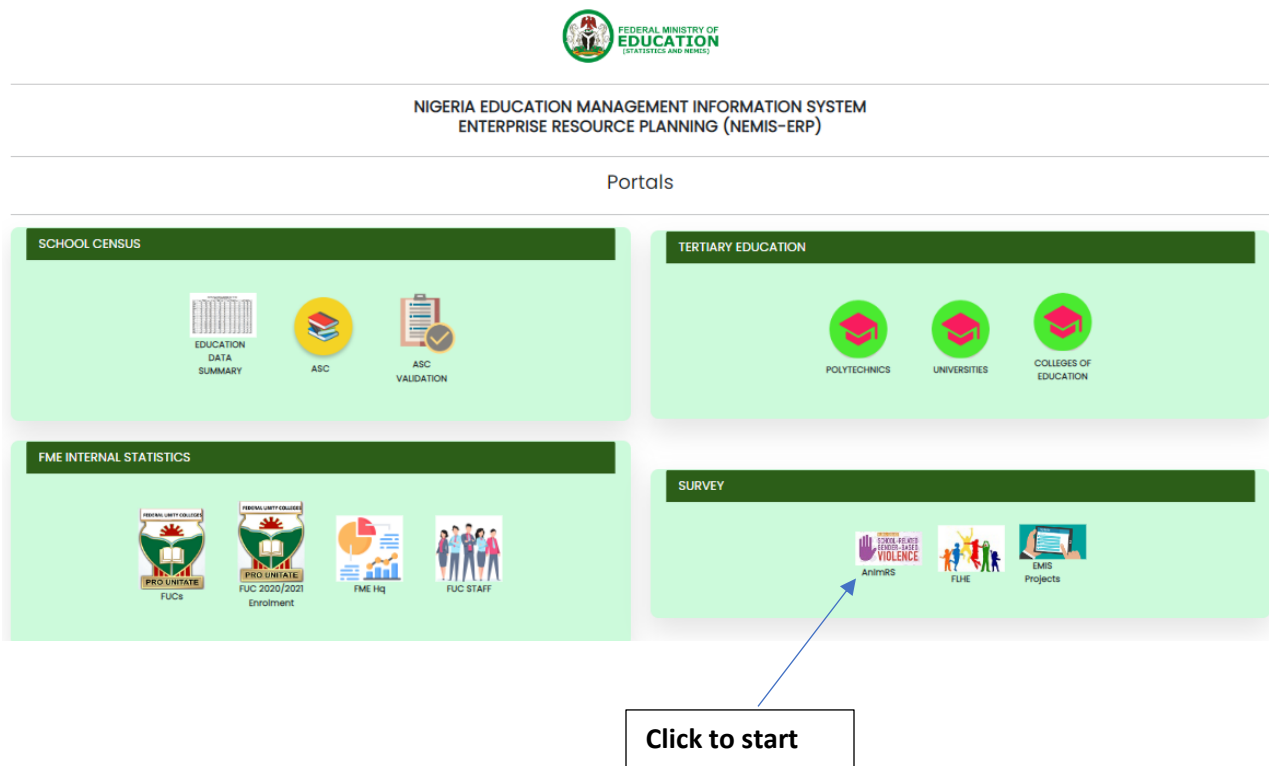


Respondents

1. All Learners (pupils/students) in school: Learners should be provided laptop/tablets with earpiece to privately listen to the audio computer assisted self interview and respond to the questions.
2. All Teachers in School
3. Head Teacher/ Principal of the school

The AnImRS Tool

Visit www.nemiserp.com , click on 'AnImRS' as shown below



or type <https://srgbv.nemiserp.com> directly in your web browser



Analysis and Imaging of Responses to School Related Gender Based Violence (AnImRS)

Questionnaire

Learners Teachers Head Teacher / Principal

Learners' Cumulative Report

All Learners Special Needs(Male) Special Needs(Female)
School Climate Gender Belief Bullying Corporal Punishment Sexual Harassment

Learners Response

To be filled by all pupils/students



Analysis and Imaging of Responses to School Related Gender Based Violence (AnImRS)

Questionnaire

Learners Teachers Head Teacher / Principal

On the home page, Enumerator should Click on Learners, fill in the School Characteristics and click 'Start' , this process will be repeated for all learners.

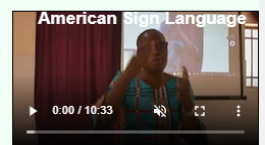
Enumerator

School Characteristics

| | |
|--|----------------|
| Reference | 63c6ea5e139bb |
| State | FCT |
| LGA | AMAC |
| School Code | 10999 |
| School Name | NEMIS COLLEGE |
| Sector | Public |
| Location | Urban |
| System of Education | Co-Educational |
| Does the school run shift? | No |
| Learners' Level | JSS |
| Learning Type | Boarding |
| Does the school have separate toilet for boys and girls? | Yes |
| Is water available for use in the toilet? | Yes |
| Is the toilet far from classroom? | Not far |
| Preferred Language | English |

START

| | | |
|----------------|----------------|----------------|
| Yoruba | Hausa | Igbo |
| ▶ 0:00 / 19:03 | ▶ 0:00 / 11:56 | ▶ 0:00 / 12:20 |
| Pidgin | French | |
| ▶ 0:00 / 13:46 | ▶ 0:00 / 17:20 | |



The Learner can choose any of the above languages and listen to the audio

Learner's Questionnaire

What is SRGBV? School-Related Gender-Based Violence(SRGBV) is defined as acts or threats of sexual, physical or psychological violence occurring in and around schools, perpetrated as a result of gender norms and stereotypes, and enforced by unequal power dynamics(UNESCO/UNGEI (2015)).

Please, answer based on occurrence in the last school term

Socio-Economic Characteristics

1. Reference
2. Gender ☐ Male ☐ Female
3. Age
4. Did you attend this school last term? ☐ Yes ☐ No
5. How do you get to school? ☐ Walking ☐ Tricycle ☐ School Bus ☐ Motorcycle ☐ Bicycle ☐ Car
6. Do you have any disability? ☐ Blind/Visually Impaired ☐ Hearing/Speech Impaired ☐ Albinism ☐ Autism ☐ Physically challenged ☐ Mentally challenged ☐ None
7. Are your parents alive? ☐ Yes ☐ No
8. Who do you live with? ☐ Parents ☐ Father ☐ Mother ☐ Uncle ☐ Aunt ☐ Others

School Climate

1. Do you have learner friendly teachers? ☐ Yes ☐ No
2. Do you have guidance counsellors in the school? ☐ Yes ☐ No
3. Do you belong to any club/society in school? ☐ Yes ☐ No
4. Are you part of any group that the school does not know about? ☐ Yes ☐ No
5. Have you ever experienced a threat while moving around the school? ☐ Never ☐ Once ☐ Sometimes ☐ Very Often ☐ Always
6. Are you sometimes afraid to play with other learners in school? ☐ Never ☐ Once ☐ Sometimes ☐ Very Often ☐ Always
7. Do you treat other learners with respect? ☐ Never ☐ Once ☐ Sometimes ☐ Very Often ☐ Always
8. How often do you do your classwork? ☐ Never ☐ Once ☐ Sometimes ☐ Very Often ☐ Always
9. Do you ask teachers for help with classwork? ☐ Never ☐ Once ☐ Sometimes ☐ Very Often ☐ Always
10. Do you fight with other learners in your school? ☐ Never ☐ Once ☐ Sometimes ☐ Very Often ☐ Always
11. Have you ever been threatened by other learners in the school? ☐ Never ☐ Once ☐ Sometimes ☐ Very Often ☐ Always
12. Do teachers punish learners unfairly? ☐ Never ☐ Once ☐ Sometimes ☐ Very Often ☐ Always

Gender Attitudes and Beliefs

1. Boys are smarter than girls ☐ Agree ☐ Disagree ☐ Not Sure
2. Boys are better in Mathematics and Science than girls ☐ Agree ☐ Disagree ☐ Not Sure
3. It's better for girls to be quiet ☐ Agree ☐ Disagree ☐ Not Sure
4. Boys should not cry(its a sign of weakness) ☐ Agree ☐ Disagree ☐ Not Sure

Bullying

1. How frequent has someone made fun or teased you? ☐ Never ☐ Once ☐ Sometimes ☐ Very Often ☐ Always
2. How frequent has someone used bad words on you? ☐ Never ☐ Once ☐ Sometimes ☐ Very Often ☐ Always
3. How frequent has someone spoilt your thing on purpose? ☐ Never ☐ Once ☐ Sometimes ☐ Very Often ☐ Always
4. Has anyone forced you to do something you did not want to do such as join a group to make fun or hurt another learner? ☐ Never ☐ Once ☐ Sometimes ☐ Very Often ☐ Always
5. Has anyone physically hurt you on purpose by pushing you down, kicking you, or hitting you with a hand, clenched fist or an object? ☐ Never ☐ Once ☐ Sometimes ☐ Very Often ☐ Always

Corporal Punishment

- Does group punishment make learners more obedient or well behaved in school?

☐ Never
 ☐ Once
 ☐ Sometimes
 ☐ Very Often
 ☐ Always
- How often has a teacher made you stand/kneel or punish you in a way that you felt pain ?

☐ Never
 ☐ Once
 ☐ Sometimes
 ☐ Very Often
 ☐ Always
- Has a staff made you feel bad in front of other students?

☐ Never
 ☐ Once
 ☐ Sometimes
 ☐ Very Often
 ☐ Always
- Has any staff hit you with a hand or closed fist on any part of your body?

☐ Never
 ☐ Once
 ☐ Sometimes
 ☐ Very Often
 ☐ Always
- Has any staff made you work in school as punishment?

☐ Never
 ☐ Once
 ☐ Sometimes
 ☐ Very Often
 ☐ Always
- Has any staff made you work in his/her house as punishment?

☐ Never
 ☐ Once
 ☐ Sometimes
 ☐ Very Often
 ☐ Always
- Has any staff punish and injured you in school?

☐ Never
 ☐ Once
 ☐ Sometimes
 ☐ Very Often
 ☐ Always
- How often have you been made to clean school environment as punishment?

☐ Never
 ☐ Once
 ☐ Sometimes
 ☐ Very Often
 ☐ Always

Sexual Harrasment/Abuse

- Has anyone ever peeped at you while in the school toilet?
- Has any student ever made unwelcome sexual comments to or about you?
- Has anyone ever pulled your clothing to expose your underwear or any body part?
- Has any teacher threatened to fail you if you don't do something sexual, like kissing or touching?
- Has anyone touched your breast, vagina, penis or bum?
- Has anyone attempted to sexually assault you?

☐ Never
 ☐ Once
 ☐ Sometimes
 ☐ Very Often
 ☐ Always

American Sign Language
 0:00 / 10:33

SUBMIT

Learner Response received, thank you

[Home Page](#)

Click 'Home page' to start another Learner's Questionnaire

Teachers Response

Note: To be filled by all Teachers

Analysis and Imaging of Responses to School Related Gender Based Violence (AnImRS)

Questionnaire

Learners **Teachers** **Head Teacher / Principal**

On the home page, Click on Teachers, fill in the School Characteristics and click **'Start'**

Enumerator

School Characteristics

Reference

School Code

School Name

Location

System of Education

START




Teacher's Questionnaire

What is SRGBV? School-Related Gender-Based Violence(SRGBV) is defined as acts or threats of sexual, physical or psychological violence occurring in and around schools, perpetrated as a result of gender norms and stereotypes, and enforced by unequal power dynamics(UNESCO/UNGEI (2015)).

Please, answer based on occurrence in the last school term

Socio-Economic Characteristics

| | |
|---|--|
| Reference | <input type="text" value="63c8d41934130"/> |
| Gender | <input type="text" value="Select"/> |
| Marital Status | <input type="text" value="Select"/> |
| Age | <input type="text"/> |
| Highest level of Education | <input type="text" value="Select"/> |
| How long have you been teaching | <input type="text"/> Years |
| How long have you been teaching in this school | <input type="text"/> Years |
| Did you teach in this school last term? | <input type="text" value="Select"/> |
| Have you been trained on School Related Gender Based Violence(SRGBV)? | <input type="text" value="Select"/> |
| Have you been trained on Family Life Health Education(FLHE)? | <input type="text" value="Select"/> |
| Do you have learners with special needs in your class? | <input type="text" value="Select"/> |
| Do you feel safe in the school premises? | <input type="text" value="Select"/> |
| Have you ever been disrespected in school? | <input type="text" value="Select"/> |
| Do you treat other staff with respect? | <input type="text" value="Select"/> |
| How often do teachers support the school administrators in achieving set targets (learning, discipline, etc.) | <input type="text" value="Select"/> |
| Do learners treat each other with respect | <input type="text" value="Select"/> |
| Do you treat learners equally? | <input type="text" value="Select"/> |
| Do learners threaten you? | <input type="text" value="Select"/> |
| Do learners threaten other teachers? | <input type="text" value="Select"/> |
| Have you heard about teachers sexually harrassing or abusing learners? | <input type="text" value="Select"/> |
| Have you heard about teachers threatening learners? | <input type="text" value="Select"/> |
| Is individual counselling provided to learners when needed? | <input type="text" value="Select"/> |




Gender Attitudes and Beliefs

Do you think boys are smarter than girls Select ▼

Do you think boys are better in Mathematics and Science than girls Select ▼

Is it acceptable for girls to take things such as mobile phone, money, or jewelry in exchange for sexual favors? Select ▼



Bullying

Has anyone forced you to do something you did not want to do? Select ▼

Have you been involved in physical or verbal fights with other staff? Select ▼

Have you been verbally or physically hurt by learners? Select ▼

Have you been verbally or physically hurt by a Parent/Guardian? Select ▼

Have you been denied some rights by the management or staff at anytime? Select ▼

Disciplinary Procedures

Is there a disciplinary committee in your School? Select ▼

Do you think girls should return to school after child birth Select ▼

Do you send learners out of the classroom as punishment? Select ▼

Do learners feel safe reporting their fellow learners to teachers? Select ▼

Do you take action when learners report violence? Select ▼

Do you report cases of abuse to the School management? Select ▼

Does the School management take action when Teachers abuse learners? Select ▼

Do teachers or school management exercise disciplinary measures on learners when cyber-related misconduct is reported? Select ▼

SUBMIT

Response received, thank you!

[Home page](#)

Click 'Home page' to start another Teacher's Questionnaire

School Response

To be filled by Head Teacher/ Principal

Analysis and Imaging of Responses to School Related Gender Based Violence (AnImRS)

Questionnaire

Learners

Teachers

Head Teacher / Principal

On the home page, Click on Head Teacher/Principal, fill in the School Characteristics and click **'Start'**

Enumerator

School Response

Reference
School Code
Name of School
Sector ☐ Private ☒ Public
Level of School ☐ Pre-Primary/Primary ☐ JSS ☐ SSS ☒ JSS & SSS
Location ☒ Urban ☐ Rural
Type of School ☐ Day ☒ Boarding
Education type ☐ Boys only ☐ Girls only ☒ Mixed

START



School Response

What is SRGBV? School-Related Gender-Based Violence (SRGBV) is defined as acts or threats of sexual, physical or psychological violence occurring in and around schools, perpetrated as a result of gender norms and stereotypes, and enforced by unequal power dynamics (UNESCO/UNGEI (2015)).

Please, answer based on occurrence in the last school term

Rules and Regulations

Reference

| | |
|--|-------------------------------------|
| Are you aware of the National Gender Policy in your school? | <input type="text" value="Select"/> |
| Do you have a copy of the policy in your school? | <input type="text" value="Select"/> |
| Have the staff and learners been sensitized on the policy? | <input type="text" value="Select"/> |
| Is there any discrimination based on hierarchy in the school? | <input type="text" value="Select"/> |
| Is there any penalty attached to the violation of the policy? | <input type="text" value="Select"/> |
| Is the policy being discussed with SBMC, PTA? | <input type="text" value="Select"/> |
| What is the level of the implementation? | <input type="text" value="Select"/> |
| Does your school have student parliament to enable students express their views? | <input type="text" value="Select"/> |
| Does the school have a disciplinary committee? | <input type="text" value="Select"/> |
| Do you know somebody that has been sexually harassed? | <input type="text" value="Select"/> |
| Who is the offender? | <input type="text" value="Select"/> |
| Does your school have effective security measures to monitor the activities within the school environment? (e.g trained security personnel, security lights, Security cameras, Perimeter fencing)? | <input type="text" value="Select"/> |
| Are the counsellors in your school readily available to the learners and parents? | <input type="text" value="Select"/> |
| Do the counsellors monitor learner's performance based on their individual abilities and interest? | <input type="text" value="Select"/> |

Teacher Training

- Does a code of conduct for teachers exist in your school? Select ▼
- Is there any penalty for breaching the code of conduct? Select ▼
- Are teachers in your school trained on School Related Gender-Based Violence(SRGBV)? Select ▼
- Are teachers in your school trained on Family Life Health Education (FLHE)? Select ▼
- How often do you conduct training, seminars and workshops for teachers on gender-based violence? Select ▼
- Is gender-equality observed when selecting teachers for training? Select ▼
- How often do you promote programs on gender-based violence? Select ▼
-

Bullying

- Do you discuss cases of violence, bullying and sexual harassment at PTA/SBMC meetings? Select ▼
- Do learners engage in physical fight with one another or group of learners? Select ▼
- Has any learner ever hurt another by beating, slapping, or shoving? Select ▼
- Has any learner ever hit or threatened other learners with weapons such as knife, stick, gun etc? Select ▼
- Do learners intimidate other students with lies, rumor or insults, in persons or through social media? Select ▼
-

Sexual Harassment

- Have you heard about any staff being sexually harassed by a staff? Select ▼
- Have you heard about any staff being sexually harassed by a learner? Select ▼
- Have you heard about any learner being sexually harassed by a staff? Select ▼
- Have you heard about any learner being sexually harassed by a learner? Select ▼
- Is there any mechanism put in place to protect the learners that have been sexually harassed? Select ▼
- Is there any mechanism put in place to safeguard learners from falling victims of violence? Select ▼
- Are Staff approachable for report of violent acts? Select ▼
-

SUBMIT

School Response received, thank you!

[Home page](#)

Click 'Home page' to return to Home.